



# the madison

House Size :

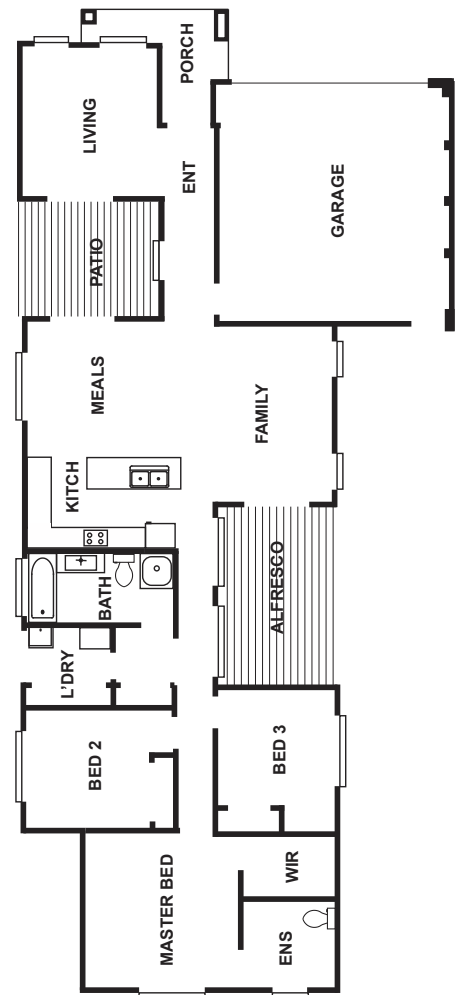
House Area (m<sup>2</sup>) : 216

House Area (sq) : 23.2



The beautiful Madison is a single-storey home complete with the best in casual, family living. The stunning hub of the home revolves around the kitchen, family and dining areas amongst the extra high ceilings.

The kitchen also includes contemporary features while the front study/office room can easily be converted into another bedroom opening out to a private courtyard.



Talk to any of our qualified consultants and find out how Citiwest Homes can tailor this design to exactly fit your needs.

Plans, prices, specifications and conditions of offer(s) are subject to change without notice. Illustrations, dimensions and house plans shown are a guide only and may vary subject to final drawings. Classic floorplan illustrated. Facade shown: optional extra.



# the grandview

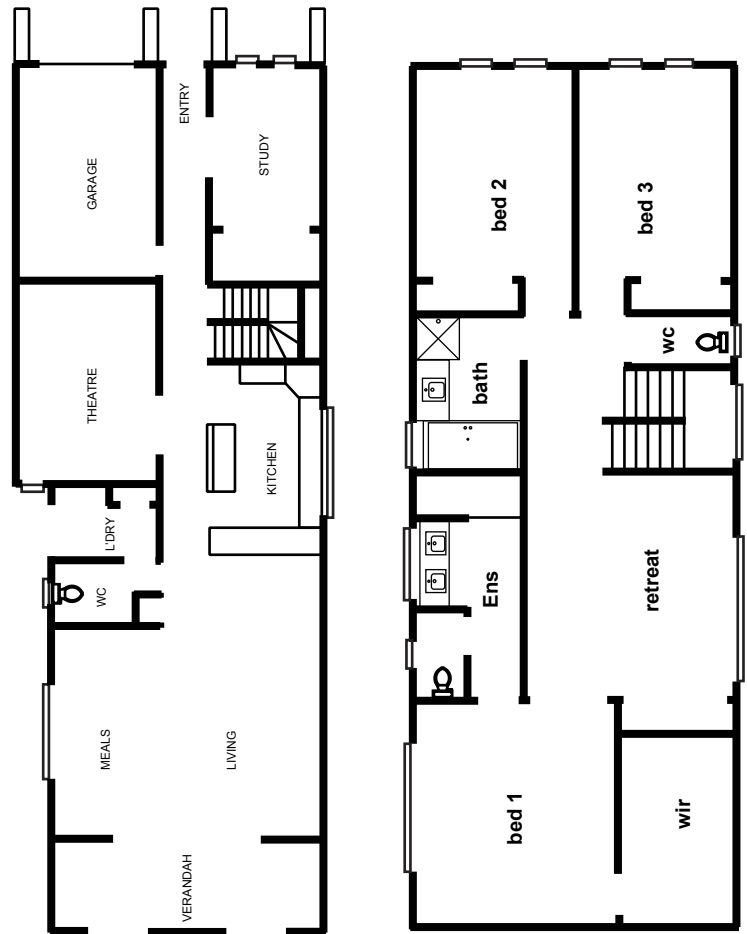
House Size :

House Area (m<sup>2</sup>) : 348

House Area (sq) : 37.5



The Grandview is a home you'll truly love. Designed with ample room to grow, the grandview boasts wide open spaces, a raised kitchen area and a spacious upstairs zone including a stunning master suite with walk-in robe.



Talk to any of our qualified consultants and find out how Citiwest Homes can tailor this design to exactly fit your needs.

Plans, prices, specifications and conditions of offer(s) are subject to change without notice. Illustrations, dimensions and house plans shown are a guide only and may vary subject to final drawings. Classic floorplan illustrated. Facade shown: optional extra.



# the elwood

House Size :

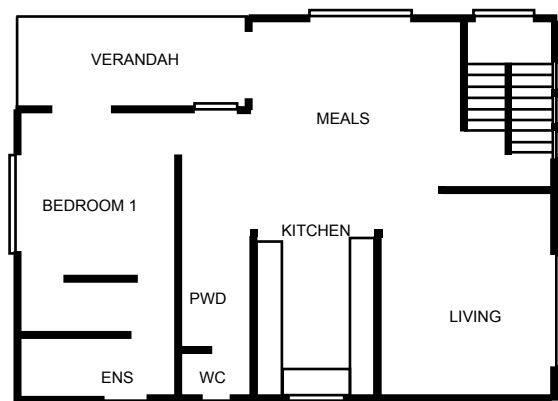
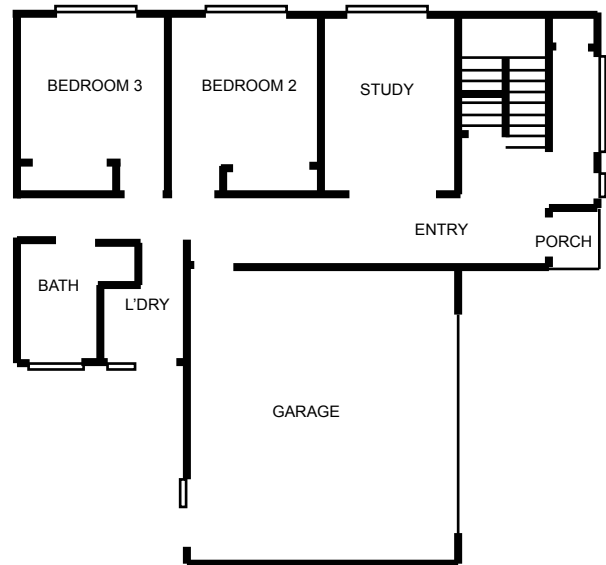
House Area (m<sup>2</sup>) : 231

House Area (sq) : 25.1



The design philosophy behind the Elwood was to create a double-storey home with the living areas located upstairs. Ideal for home buyers who have views or live in coastal regions.

The home features a balcony to the main bedroom, and open living partitioned by the contemporary kitchen and upstairs powder room, perfect for relaxing or entertaining.



Talk to any of our qualified consultants and find out how Citiwest Homes can tailor this design to exactly fit your needs.

Plans, prices, specifications and conditions of offer(s) are subject to change without notice. Illustrations, dimensions and house plans shown are a guide only and may vary subject to final drawings. Classic floorplan illustrated. Facade shown: optional extra.





# the urban

House Size :

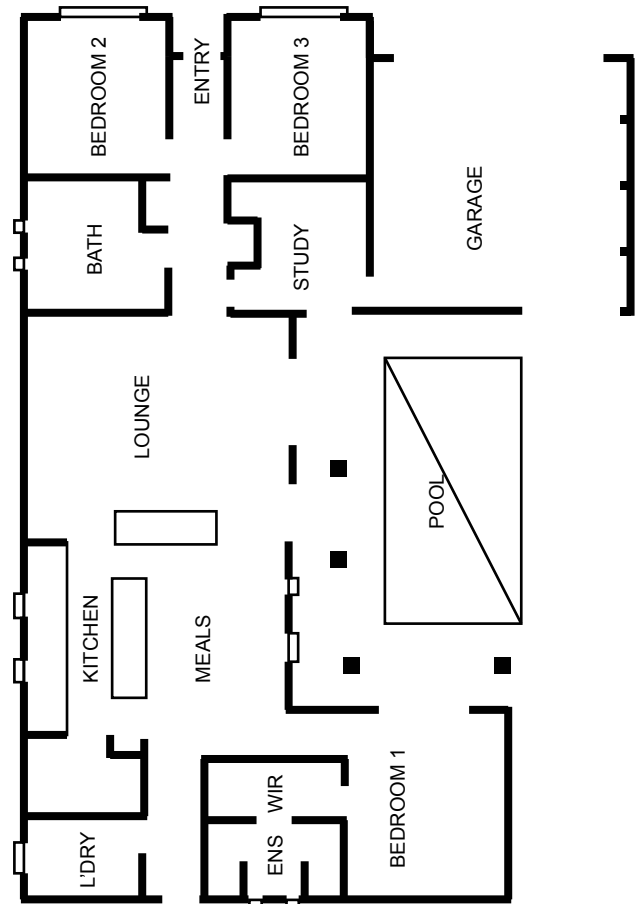
House Area (m<sup>2</sup>) : 269

House Area (sq) : 28.9



The Urban is a single-storey home that features a study, central fireplace and bedrooms with built-in robes and a unique open plan which allows for a number of indoor/outdoor entertaining options.

The striking and sleek design is ideal for those who want to make a statement with their home.



Talk to any of our qualified consultants and find out how Citiwest Homes can tailor this design to exactly fit your needs.

Plans, prices, specifications and conditions of offer(s) are subject to change without notice. Illustrations, dimensions and house plans shown are a guide only and may vary subject to final drawings. Classic floorplan illustrated. Monterey facade shown: optional extra.



# the ruby

House Size :

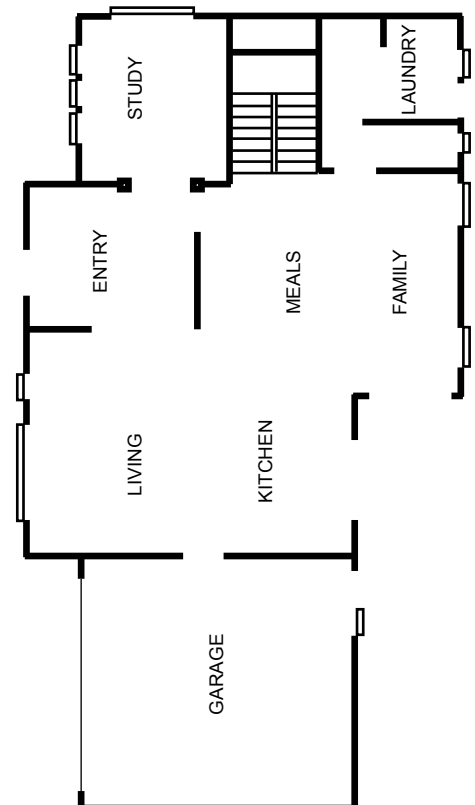
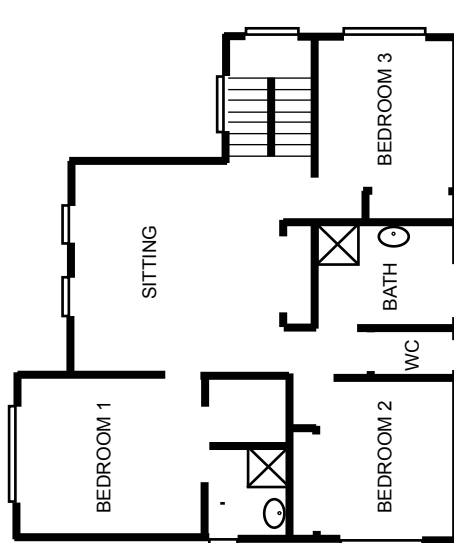
House Area (m<sup>2</sup>) : 301

House Area (sq) : 32.83



The Ruby is specifically designed for a wide frontage block, maximising space with its flexible floorplan.

Boasting a number of contemporary features, the Ruby includes a perfect balance of formal and casual living, making it ideal for a growing family.



Talk to any of our qualified consultants and find out how Citiwest Homes can tailor this design to exactly fit your needs.

Plans, prices, specifications and conditions of offer(s) are subject to change without notice. Illustrations, dimensions and house plans shown are a guide only and may vary subject to final drawings. Classic floorplan illustrated. Facade shown: optional extra.